

## NEWS AND EVENTS

### FAITH WEBINARS 2025

It's not too late to sign up for our remaining faith webinars for this academic year. Each webinar costs £30, or you can opt to buy in to all seven webinars that have taken place across the year and receive the slides and recording of the webinar for the bundle price of £150. The webinars cover a number of faith related concerns and include a faith visitor. If you are interested in attending any of the remaining dates, or want to purchase the recordings please contact [enquiries@penninelearning.com](mailto:enquiries@penninelearning.com).

- Christianity – 28<sup>th</sup> April 2025 4-5.30pm
- Hindu Dharma – 11<sup>th</sup> June 2025 4-5.30pm

### BELIEVING AND BELONGING CLASSROOM PLUS SUPPORT WEBINAR – LAST OPPORTUNITY TO ATTEND

Pennine Learning are hosting their last Believing and Belonging support webinar of the year on the 13<sup>th</sup> May 2025. Running online from 4-5pm this webinar is an ideal space to hear important updates about resources and the Believing and Belonging syllabus. There are also opportunities for Q&A for teachers who are new to using the resource portal or need further help with utilising the resource package in their schools. To sign up for this webinar please contact [enquiries@penninelearning.com](mailto:enquiries@penninelearning.com). This session is live only and will not be available as a recording.

### BELIEVING AND BELONGING RESOURCE PACKAGE

Our resource package to compliment the new syllabus is still available to purchase for both Primary and Secondary schools who require a strong set of resources to deliver the new syllabus in their schools. The cost for the resources is £490+VAT for all EYFS, KS1 and KS2 core and focus units or £390+VAT for all KS3 core and focus units. This is a one-off subscription covering the five-year life of the syllabus with no annual repeat payments. If you would like to order the resource package please email [esther@penninelearning.com](mailto:esther@penninelearning.com). There is an individual planning element available through Business Solutions to support the resources package. The two work hand in hand, but schools can opt to design their own planning should they wish to. Should you be interested in purchasing the planning element also, this can be attained from Business Solutions at the following email address [business.solutions@kirklees.gov.uk](mailto:business.solutions@kirklees.gov.uk). This comes at a cost of £220.

### UPCOMING NETWORK MEETING DATES

- Calderdale Primary Network – 4/3/2025, 1-3.30pm Savile Park Heath Campus
- Kirklees Primary Network – 10/3/2025, 1-3.30pm
- Leeds Primary Network – 12/3/2025, AFTERNOON 1.15-3pm TWILIGHT 3.45-5.30pm, Technorth Chapel Allerton
- Oldham Primary Network – 18/3/2025, 4-5.30pm, St Pauls Royton
- Oldham/Tameside Secondary Network – 4/6/2025, 2-5pm, Mahdlo Centre
- Tameside Primary Network – 19/6/2025, 4-5.30pm
- Salford Secondary Network – 25/6/2025, 4.15-5.15pm, Virtual Meet

- Salford Primary Network – 2/7/2025, 4.15-5.15pm, Buile Hill Park Hall

**We are very excited to announce** that we also have new networks starting in Salford/Manchester (joint), free for RE teachers to attend. Please see the fliers below for dates and information.

Please email [enquiries@penninelearning.com](mailto:enquiries@penninelearning.com) to register your name to attend any of these network meetings.

**NEW** enquiries@penninelearning.com

## MANCHESTER AND SALFORD PRIMARY RE NETWORK

- Updates in RE
- Resources
- Recall
- Curriculum development
- Networking
- Subject Knowledge Enhancement
- Career development



We are excited to announce a new joint RE Network for Manchester and Salford teachers.  
Meetings will be FREE.

The first meeting will be at Buile Hill Park Hall on 2nd July  
13.30- 16.00

Register by contacting [enquiries@penninelearning.com](mailto:enquiries@penninelearning.com)

**NEW** enquiries@penninelearning.com

## MANCHESTER AND SALFORD SECONDARY RE NETWORK

- Updates in RE
- Resources
- Revision
- Moderation
- Curriculum development
- Networking
- Subject Knowledge Enhancement
- Career development



We are excited to announce a new joint RE Network for Manchester and Salford teachers.  
Meetings will be FREE.

The first meeting will be at Buile Hill Park Hall on 26th June  
from 13.30-16.00

Register by contacting [enquiries@penninelearning.com](mailto:enquiries@penninelearning.com)

## RE CHAT UK

NATRE's monthly Twitter forum, #REChatUK takes place on the first Monday of the month, from 8-9pm. These fast-paced, fun and informative discussions are a great way to discover new ideas, resources and conversations. The forum is also an effective place to network and meet new people on Twitter. Follow [@NATREupdate](https://twitter.com/NATREupdate) on Twitter, and the hashtag #REChatUK.

## FESTIVAL OF FAITH HALIFAX MINSTER



Halifax Minster is launching a new annual Festival of Faith which will run from Ash Wednesday through to Easter Day. The Festival is outward facing, looking to draw people from outside the Minster, to come and experience this common ground yet sacred meeting place with God. The Festival draws upon excellence in many fields and genres, from film and live music, to public theology and visiting preachers, poetry and scripture. The Festival ends with the drama of Holy Week, recalling the death and resurrection of Jesus Christ.

For a full programme of events please visit [halifaxminster.org.uk/wp-content/uploads/2025/02/Festival-of-Faith-Programme-2025-Digital.pdf](http://halifaxminster.org.uk/wp-content/uploads/2025/02/Festival-of-Faith-Programme-2025-Digital.pdf).

## FAIR AND FUNKY SUSTAINABILITY WORKSHOPS FOR WORLD BOOK DAY

Fair and Funky are running a range of SCRAPtastic stories workshops for EYFS and KS1 for this World Book Day. Each workshop is inspired by a love for books and designed to raise awareness, encourage learning and inspire motivation through innovative activities. You can sign up for a workshop by visiting [School Workshops Archives - fairandfunky - fairtrade products](#). As an added bonus a free book will be gifted to your class with each session purchased.

## BOOKINGS NOW OPEN FOR THE FAIR AND FUNKY OUTDOOR ECO-CONFERENCE



The outdoor eco conference to celebrate World Environment Day is BACK at Holme Valley Campsite on Thursday 5<sup>th</sup> June 2025. Schools are invited to bring two members of staff and up to 8 students to take part at a cost of £150. **If you book before the Easter term this is reduced to £135.** There are JUST 8 SCHOOL PLACES AVAILABLE so please email [helen@fairandfunky.com](mailto:helen@fairandfunky.com) for a booking form as soon as possible.

The conference will celebrate the planets diversity and raise awareness of the role we all play in looking after our local environments. Interactive workshops from leading practitioners will share creative ideas and solutions on environmental issues

including biodiversity, pollution, nature and growing.

## PICTURE NEWS PILOT – 4 PACKS FREE OF CHARGE AVAILABLE

Each week, we explore a current news story through a 'big question' and engaging image and email a ready-to-go PowerPoint for you to use for assemblies, displays or a morning activity. The resources embed British values, protected characteristics and support oracy in school. [Request the next 4-packs, free of charge here](#)



## RE HUBS 'VIRTUAL TOUR' SESSION AVAILABLE

Park Primary School in Colne, Lancashire were recently the 'virtual location' for a new short presentation film about the RE Hubs website. The film is a virtual tour of the school showcasing all the wonderful RE happening at the school, and exemplifying different aspects of the RE Hubs website. The virtual tour will take place on Monday 10th March, 3.30-4.30pm. All welcome to attend. Information and booking at [North West networking session](#).

## PROFESSIONAL DEVELOPMENT AND TRAINING

### RE:ONLINE - REXCHANGE 2024

Did you miss out on attending RExChange 2024? This event took place on 18th-19th October 2024. On their website you will find recordings of keynotes, in conversation and panel sessions.

The programme is also available for download. Many of the speakers who presented at the event have also shared their slides. You can catch up with some free online sessions available at [RExChange 2024 - RE:ONLINE](#).



### ECT FREE MONTHLY WEBINARS WITH NATRE

Are you an Early Career Teacher (ECT) in Religious Education seeking to enhance your skills and subject knowledge? Or perhaps you're an experienced teacher new to teaching Religious Education, including Religion, Values and Ethics (RVE), Religious and Moral Education (RME), and Religious Studies? Join NATREs FREE NEW2RE monthly webinars, explicitly designed to support you in developing your teaching abilities and knowledge in both Religious

Education and Religious Studies, all while providing valuable evidence to meet the ECT standards. If you're interested please visit their website [here](#).

## APPLICATIONS FOR LESSONS FROM AUSCHWITZ CPD

Applications for *Lessons from Auschwitz* CPD for Teachers through the Holocaust Educational Trust are now open.

Designed for Key Stage 3, 4 or 5 teachers from any subject area, this course provides the knowledge and resources to engage students with this critical chapter of history:



- **Hear History Firsthand:** Engage with a Holocaust survivor's personal testimony during the in-person seminar. Inspire your students with these powerful, living accounts.
- **Visit Auschwitz-Birkenau:** Join a one-day visit to Oświęcim and the Auschwitz-Birkenau Memorial and Museum—a profound experience that will shape your teaching.
- **Access Exclusive Online Resources:** Dive into the *Lessons from Auschwitz Online Platform*, with tailor-made materials spotlighting individual Jewish families' journeys before, during, and after the Holocaust.
- **Learn from the Experts:** Attend seminars led by leading Holocaust educators and researchers, offering guidance to strengthen your knowledge.
- **Exclusive access:** join further teacher training programmes through the Holocaust Educational Trust and invite Trust staff to lead a CPD session in your school for free!

If you'd like to apply please visit [Holocaust Educational Trust - Lessons from Auschwitz Project - CPD for Teachers 2025-LFA](#).

## RE HUBS NEW TO LOCAL GROUP LEADERSHIP TRAINING

Linking in with NATRE, RE Hub are running their new to local group leadership training in the Spring term. This training is for teachers who are new to running a local network or would like to set one up in their local area / MAT. The training takes place over two sessions in April and May and explores effective leadership and practical ideas for running a network alongside the opportunity to network with fellow local leaders. You can book on [here](#).



## NATIONAL MAT RE NETWORK IN PARTNERSHIP WITH NATRE, AREIAC AND REC

Do you lead Religious Education across a MAT? Why not join RE Hubs national MAT RE network Networking and have the opportunity to meet with other RE Leads in MATs across the country. This is a great opportunity to network and hear from other MAT RE leads about how they have engaged and informed their leadership teams on RE and find out where other MAT RE leads go to support RE learning. The next meeting is on 1<sup>st</sup> April 4.00-5.30pm where Hazel Henson, RE lead at Ofsted, will be talking about high quality RE in MATS. Book your place [here](#)

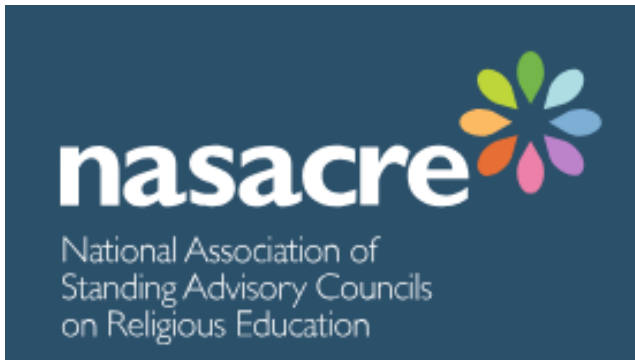
This event will be free for all RE leads in MATs who have NATRE or AREIAC membership. If you are not a member of either organisation, you will need to join or a fee will be payable to attend this meeting of £100. Links to join as follows –

<https://www.natre.org.uk/membership>

<https://www.areiac.org.uk/join-areiac>



## NASACRE CPD FOR LOCAL GROUP LEADERS



The next 'NASACRE In Conversation' regional events are coming in March/April with a NASACRE executive member at each meeting. These events are for SACRE chairs, vice-chairs, SACRE consultants and LA reps. These meetings provide a space where SACREs can support one another to problem solve issues as well as a place where they can raise issues with the NASACRE Executive. The North West regional event will take place on Monday 24<sup>th</sup> March at 1pm as a hybrid event online and at Preston County Hall. Please note in-person

places are limited and you will need to let them know if you need parking. A flyer for the event can be found here: <https://www.re-hubs.uk/upskill/sacres/nasacre-in-conversation/>. Please do get in touch with Jane Yates via email [northwest@re-hubs.uk](mailto:northwest@re-hubs.uk) to book your place.

## CULHAM ST GABRIELS LEADERSHIP PROGRAMME

The Leadership programme is aimed at those who teach pupils from ages 4-18 and are currently leading RE, RME or RVE outside of their own school. This could include working across a MAT, local area, region or in a national capacity. They welcome applicants from England, Wales, Scotland, and Northern Ireland. Applications are now open and close March 21st.



LEADERSHIP  
PROGRAMME

This programme is a fantastic (and fully funded) opportunity for applicants to find their voices as leaders through tailored mentoring and communities of practice. Participants in the programme will also take part in small scale action research.

Culham St Gabriels aim to develop leaders in the following four areas, helping them to become:

- Research engaged
- Curriculum engaged
- Politically engaged
- Classroom engaged

This programme brings together the following organisations who all have representatives on the steering group which oversees the programme:

- Association of RE Advisers, Inspectors and Consultants (AREIAC)
- Association of University Lecturers on RE (AULRE)
- Learn, Teach, Lead RE (LTLRE)
- National Association of SACREs (NASACRE)
- National Association of Teachers of RE (NATRE)
- RE Council of England and Wales (REC).

The programme is funded by Culham St Gabriel's.

More information about the programme can be found here: <https://www.cstg.org.uk/scholarship-programmes/leadership/>

## SCHOOL RESOURCES AND WORKSHOPS

### FREE COLLECTIVE WORKSHIP MATERIAL

ABYTTTO have released new collective worship material for Lent *Living Hope*. With 6 weeks' worth of collective worship material, *Living Hope* will take pupils on a journey through Lent reflecting on Jesus' ministry and his message of hope for all people. This flexible resource can be used in the classroom, or in a church setting and you can use and adapt the material as best fits your school context. It has been designed to run from the 24<sup>th</sup> February 2025, in the 6 weeks before the school Easter holidays. However, Lent starts on Wednesday 5<sup>th</sup> March. The resource is flexible, and you may wish to do all 6 weeks condensed into 4 weeks or choose only 4 themes to deliver. You can find out more and sign up here: [www.abyyt.com/lent](http://www.abyyt.com/lent)



### AYLA INFORMATION SESSIONS



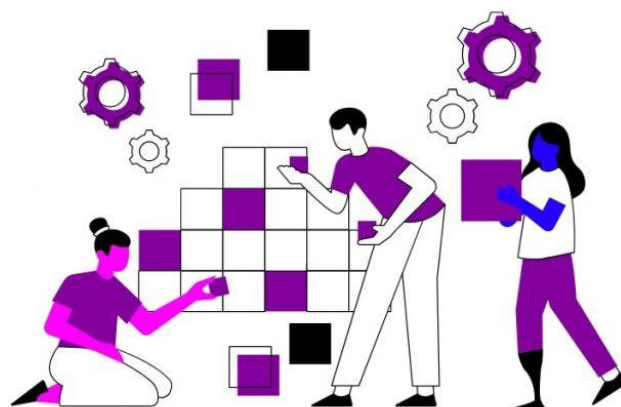
Are you looking to support your pupils to become active citizens within their communities? Do you want to develop the social skills, confidence and resilience of your pupils? Are you keen to find ways to develop SMSC, Character Education and promote pupils' Personal Development? The Archbishops' Young Leaders Award (AYLA) is a fully resourced leadership and character education programme that could support your school in meeting these objectives. You can find out more about the AYLA programme through their free online sessions this term for both Primary and Secondary schools, details of which are available at [www.abyyt.com/events](http://www.abyyt.com/events).

### JEWISH MUSEUM WORKSHOP - LONDON

If you are looking to plan an educational visit with your students to enrich their experience in the faith area of Judaism, the Jewish Museum Learning and Engagement Team are holding new school workshops at Swiss Cottage Library. Students can explore and handle objects from the collection connected to the Torah and the festival of Shabbat. You can find out more here [Onsite Workshops at Swiss Cottage Library - The Jewish Museum London](https://www.jewishmuseum.org.uk/onsite-workshops-at-swiss-cottage-library-the-jewish-museum-london).

### RE HUBS 'FILMS IN RE' RESOURCE

In the [Access Classroom Resources](https://www.re-hubs.com/access-classroom-resources) section of the RE Hubs website, there is a new section called [Films in RE](https://www.re-hubs.com/films-in-re). This contains a range of filmed based resources from national organisations such as the Faith and Belief Forum, True Tube, Understanding Humanism and BBC. It also includes resources from the North West and other regions developed as part of projects such as the Pennine Learning films and the Cumbria Virtual Voices in RE Project. If you have any suggestions for additional film based resources to add, please contact Jane Yates, [northwest@re-hubs.com](mailto:northwest@re-hubs.com).



## TACKLING SOCIAL INJUSTICE THROUGH DEVELOPING EPISTEMIC LITERACY IN RE



A new report has been published from University College London on supporting high quality RE in schools. The research took place in several London schools based in KS3 RE – it is 7 pages long and would form the basis of a very good department meeting to think about your own KS3 curriculum and what you might develop in the light of the report's findings. Epistemic literacy is the ability to understand, evaluate, and use knowledge effectively. It involves knowing:

**Where knowledge comes from** - Understanding sources of information.

**How it's created** - Knowing the processes behind research, evidence, and reasoning.

**How to judge its reliability** - Identifying bias, credibility, and validity.

**How to apply it** - Using knowledge to solve problems or make decisions.

The full booklet can be found here: [Tackling social injustice through developing epistemic literacy in Religious Education](#)



## NEW RESOURCE – INTRODUCING RELIGION AND WORLDVIEWS

The University of Nottingham have created a series of (free) training resources (co-created with teachers) for those who want to support colleagues and help adopt a Religion and Worldviews approach in school. The packs have been designed to be delivered in schools by teachers, for teachers. The resources introduce trainers and their colleagues to the

'Religion and Worldviews' approach, focusing on what that might look like in the religious education classroom at primary and secondary levels, and build on a series of videos previously produced.

You can explore all the materials here:

<https://www.nottingham.ac.uk/icemic/research/introducing-religion-and-worldviews.aspx>.

## THE WOOLF INSTITUTE

The Woolf Institute is an independent charity based in Cambridge, working on interfaith relations and religion in society through research, education, and public engagement. They provide a range of free options for schools, including:

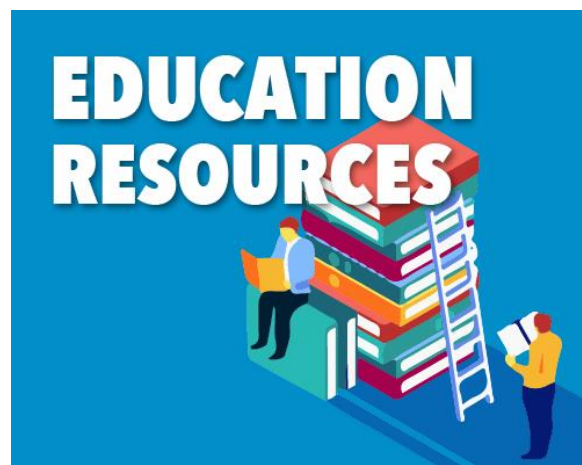
- Flexible resources for secondary religious education arising from Woolf Institute research, including teacher guides, videos, and lesson plans.
- Lunchtime Online sessions where schools can invite a Woolf Institute staff or student researcher to meet a group of students online during lunchtime to discuss their research and studies or career.

Please email [publicengagement@woolf.cam.ac.uk](mailto:publicengagement@woolf.cam.ac.uk) for more information or visit the website [here](#).

## JEWISH LIVING ONLINE

'Jewish Living Online' (JLO) is a comprehensive, authentic and engaging resource for secondary schools in England – created by The Board of Deputies of British Jews.

JLO is primarily aimed at KS3 pupils and aims to make the lives of teachers easier. It requires little planning or subject knowledge, as well as being modular and flexible - allowing RE, History and Citizenship teachers to pick and choose sections which are useful to support the schemes of work they already have in place. It provides simply laid out information, varied multimedia content (including authentic, lived experience and opinions of Jews living



in Britain today), discussion and critical thinking questions, as well as discussion questions and quizzes for assessment.

Content of JLO includes:

- Who are the Jewish people?
- Torah and Tanah
- Festivals and holy days
- The Jewish lifecycle
- History of the Jews in Britain
- Israel
- Antisemitism
- Supporting glossary and section of further recommended resources.

To view or use JLO, go to: [jlo.org.uk](http://jlo.org.uk)

To see the JLO marketing video go to: <https://bod.org.uk/bod-news/board-of-deputies-launches-jewish-living-online-a-free-digital-education-resource-for-secondary-schools/>

For further information or to register your school to use JLO, email: [jlo@bod.org.uk](mailto:jlo@bod.org.uk)

## RAMADAN 2025 – PRIMARY ASSEMBLY AND CPD

Ramadan in the UK is expected to start on the evening of 28th February subject to the sighting of the new crescent moon. To help you fully understand why Ramadan is the holiest month of the Islamic calendar and how it's a time for spiritual growth and development for many families, Muslim Learner Services will be running assemblies, workshops and staff training for primary schools. Individual online assemblies for both R/KS1 and KS2 will run on both 4th March and 14th March. Book online at the Muslim Learner services website (links below).

They are also running an in-depth Ramadan workshop just for Year 5/6 pupils with an extended Q&A session.

Muslim Learner services aim to promote a greater understanding of Islam in schools and colleges to foster better relationships between learners of all faiths and no faith. They run a number of workshops throughout the year and can be booked for assemblies on different topics relating to Islam to further educate your students. You can visit their website at the links below.

[Muslim Learner Services - Promoting a better understanding of Islam](https://muslimlearnerservices.org/)  
<https://muslimlearnerservices.org/>

## LEWISHAM COLLEGE GUIDE TO RAMADAN

A guide to Ramadan has been created by Lewisham College and shared for your use. You can access the guide here [https://ugc.production.linktr.ee/5ee79e8f-3ab0-4cc4-a1d7-cd043a451409\\_Ramadan-School-Guide-2025-compressed--1-.pdf](https://ugc.production.linktr.ee/5ee79e8f-3ab0-4cc4-a1d7-cd043a451409_Ramadan-School-Guide-2025-compressed--1-.pdf).

## NACE RESOURCES AVAILABLE – FREE OF CHARGE

NACE (National Association for Able Children in Education) have developed a suite of resources designed to support teachers in delivering high-quality Religious Education (RE) to able pupils. Resources include lesson ideas, teacher reflections, and blog posts, offering practical guidance and inspiration for both primary and secondary RE teachers. The aim is to enhance classroom practice and ensure that able pupils are effectively challenged and engaged in their learning. They are offering these resources free of charge and they can be accessed at [Resources for teaching Able pupils in RE](#).



Newsletter produced for teachers and schools in Calderdale, Kirklees, Leeds, Oldham, Tameside and Sefton – and anyone else who might find it useful! Pennine Learning is contracted by these councils to support statutory responsibilities for RE and SACRE. We work hard to make sure information is correct and up to date but cannot accept liability for any errors or changes to third party information. Views and items do not necessarily represent the views of the Councils. To contact us please email [enquiries@penninelearning.com](mailto:enquiries@penninelearning.com).